

R E A L

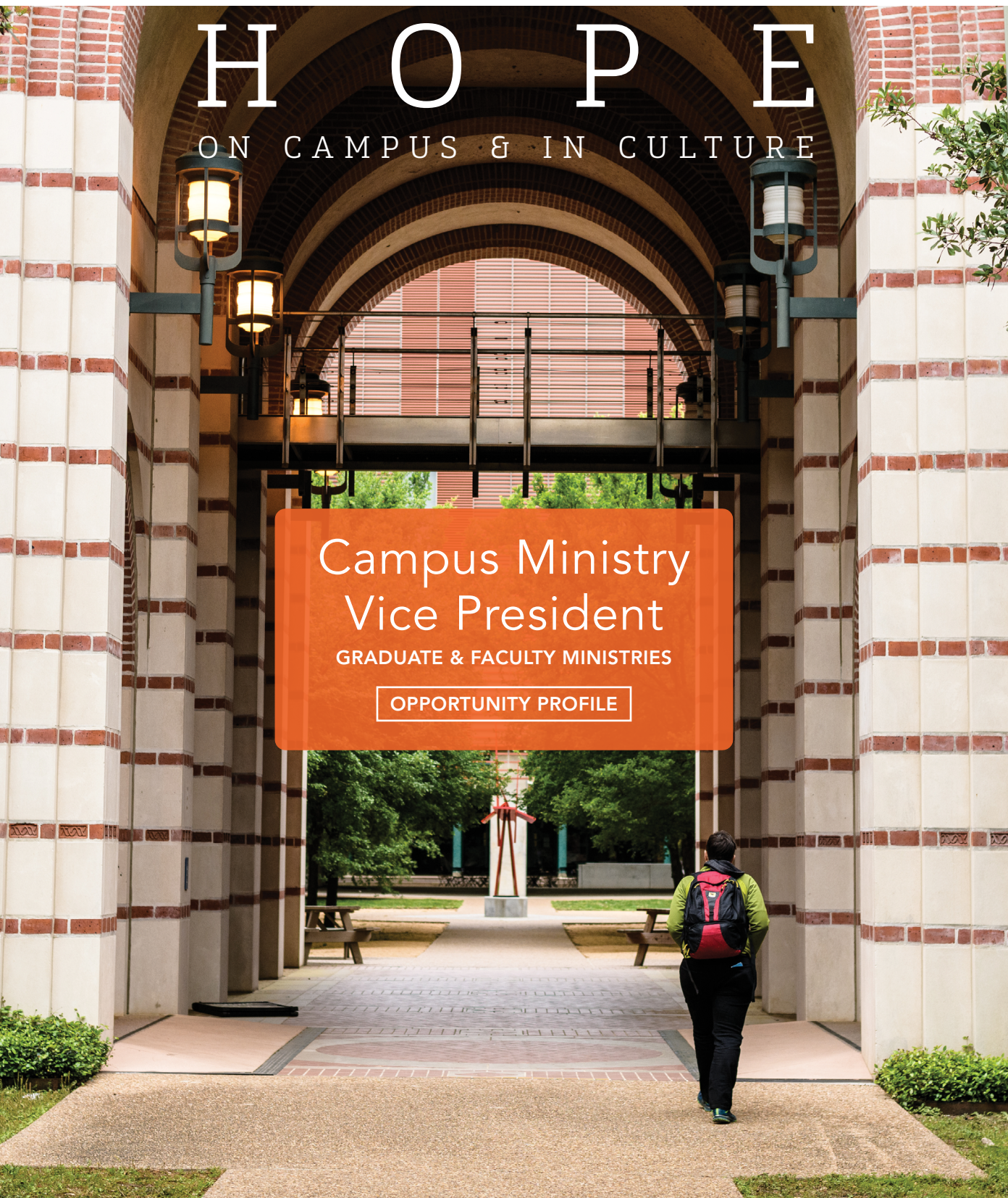
H O P E

ON CAMPUS & IN CULTURE

Campus Ministry
Vice President

GRADUATE & FACULTY MINISTRIES

OPPORTUNITY PROFILE



Who we are



Urbana Student Missions Conference

InterVarsity

InterVarsity Christian Fellowship/USA officially began in November of 1941. From our beginning, we've had a strong passion to ensure

that every college student and faculty member in the US has the opportunity to hear the gospel and experience the real hope of Jesus. That passion continues to drive InterVarsity today.

Currently, there are more than 1,000 InterVarsity staff ministers serving more than 40,000 students and faculty on over 700 campuses nationwide. In addition, we produce training materials, books, and media tools that serve both the campus and the Church more broadly.

Through our deep commitment to evangelism, multiethnicity, and collaborative partnership, we seek to build witnessing communities in every corner of every campus that are bold, ethnically diverse, and call students and faculty to follow Jesus in whole-life discipleship.

InterVarsity/USA is fiscally sound, with our current annual budget exceeding \$100 million.

Our Ministry Scope

Campus Ministry: Our vibrant ministry establishes and advances witnessing communities of students and faculty.

Missions: We mobilize whole-life, whole world disciples who live out the whole gospel.

Urbana Student Missions Conference: This triennial catalytic event brings together college and graduate students, faculty, recent graduates, pastors, church and ministry leaders, missions organizations, and schools to seek God for their place in his global mission.

InterVarsity Press: We serve those in the university, the Church, and the world by publishing resources and books that equip and encourage people to follow Jesus as Savior and Lord in all of life.

2100 Productions: Our multimedia team produces award-winning videos, campus ministry tools, conference designs, and more that serve InterVarsity's mission.

Our Purpose

In response to God's love, grace, and truth: The purpose of InterVarsity Christian Fellowship/USA is to establish and advance at colleges and universities witnessing communities of students and faculty who follow Jesus as Savior and Lord: growing in love for God, God's Word, God's people of every ethnicity and culture, and God's purposes in the world.

Our Core Commitments

Context

Universities and colleges

Formation

Scripture

Prayer

Spiritual formation

Community

Discipleship of the mind

Leadership development

Expression

Evangelism

Whole-life stewardship

Ethnic reconciliation and justice

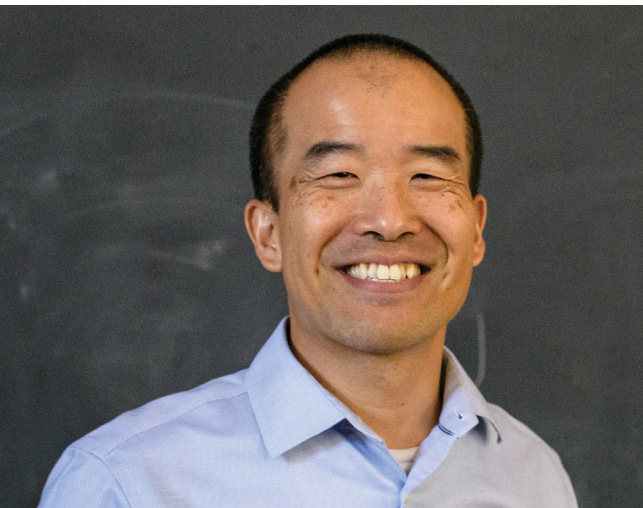
Church



Our Vision

Our vision is to see students and faculty transformed, campuses renewed, and world changers developed.

Why this Strategic Leadership Opportunity



Dear Friends,

When the National Leadership Team gathered in Orlando in 2017, we had one hope for our time together: to discern God's calling for InterVarsity's next ministry season. With many of us on our knees in prayer, God renewed our passion to see his hope spread to unreached campuses and corners of campus. This led to a unified 12-year goal, our 2030 Calling that we began working toward the next year:

Longing for revival, we catalyze movements that call every corner of every campus to follow Jesus.

Graduate and Faculty Ministries (GFM) is a key part of this vision. Faculty and graduate students occupy an important place of influence on campus, one that is strategically vital to serving campus. And so, as we seek to reach 2,500 unreached campuses by 2030, I am excited about the influence so many more Christian faculty and graduate students can have as they join God's mission on campus.

Through GFM, God is raising up a new wave of campus leaders and prayer partners, who long to see the Holy Spirit transform academia. I'm grateful for GFM's work, and I cannot wait for how the Lord builds his kingdom among faculty and grad students.

For God's glory,

Tom Lin
President
Chief Executive Officer
InterVarsity Christian Fellowship/USA

As the Executive Vice President, I am seeking a highly-motivated, gifted and called leader to become the next Vice President of Graduate & Faculty Ministries (GFMVP).

The GFMVP, in keeping with the 2030 Calling, would lead GFM to plant witnessing communities on new campuses, especially major research institutions. GFM leaders grow new and existing communities and shape women and men as whole-life disciples. These disciples bring the real hope of Jesus as faithful witnesses on campus and wherever they go. GFM fellowships include graduate student chapters, faculty communities, and professional school groups such as law, business, medicine, etc.

Bobby Gross, current GFMVP, shared these reflections about the heart and vision of this strategic sphere of the university:

"Jesus said that 'the kingdom of God is like yeast' and Paul affirmed that 'a little yeast leavens the whole loaf.' Our passion is to help Christians become 'yeastier yeast' so they can affect all the cultural spheres of our society—especially the sphere of higher education, where Christian faculty, administrators and other leaders seek to be a redeeming influence on the people, ideas, and structures!"

GFM leaders are asking for more "workers for the harvest" and praying for his kingdom (shalom, renewal, revival!) to come on campus. As Bobby retires, I am praying with great expectancy for whom the Lord will call to lead this strategic InterVarsity Division within our broader campus mission.

For Christ, the University & the nations,

Jason Thomas
Executive Vice President, Field Ministries
Chief Campus Ministries Officer



Incarnational Witnesses in a Disembodied Time



In our culture of tweets, shares, and virtual community, it is easy to feel disconnected, disembodied even. And for graduate students, conducting research, writing papers, or developing capstone projects can be even lonelier.

“Graduate school especially reminded me of how solitary and isolating the intellectual pursuit can be,” said Dr. John Inazu. “I saw, even among the graduate population, other students who probably would have loved more interaction and more community.”

Involved with InterVarsity since his undergraduate studies at Duke University, Dr. Inazu has experienced this kind of rich community firsthand. He deeply appreciated the emphasis on studying Scripture together and the opportunities to connect with other students. He also met with InterVarsity campus minister Steve Hinkle for one-on-one mentoring as they studied Bonhoeffer’s *The Cost of Discipleship*.

Among his achievements since college, Dr. Inazu has earned his PhD in political science, written several books, worked at the Pentagon, and now is the Sally D. Danforth Distinguished Professor of Law and Religion at Washington University in St. Louis, where he teaches and writes about the First Amendment, law, and religion.

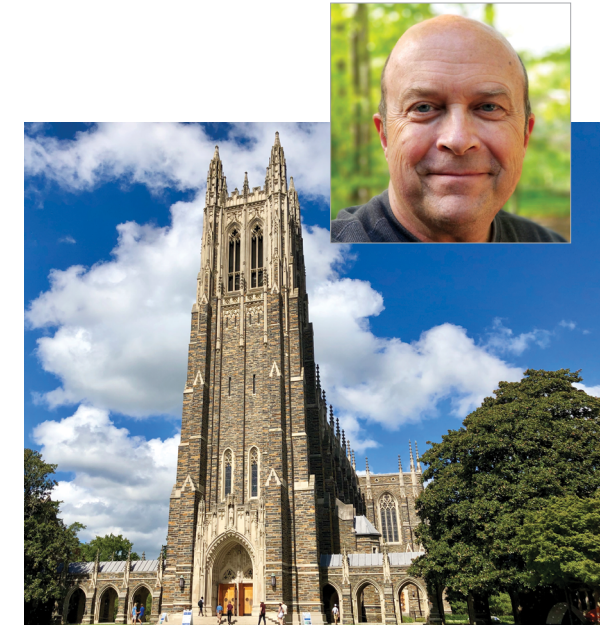
“What I appreciate about GFM is their ability and willingness to reach students and faculty at, as we say, all corners of campus, which means a lot of versatility. To recognize the textured nature of those various experiences is what incarnational ministry is about.”

The Birth and Flourishing of a GFM Ministry

At Duke University, it started small. Just a couple grad students gathering to study the Word. With an undergrad chapter of over 200 students, campus minister Steve Hinkle did not have time to oversee much more in 1990.

But after another minister was hired, Steve often hosted students in his home for dinner—making sure to have a nursery for those like him with young children.

Steve’s goal was to help tomorrow’s faculty “weave God in the story of their work and life.” For him, “integration was, and remains, the operative word that calls for a vibrant relationship with Christ.” A number of students have become faculty at Duke and other institutions.



Today, GFM works with five fellowships at Duke: PhD’s, Law, MBA, Medical, and Faculty.

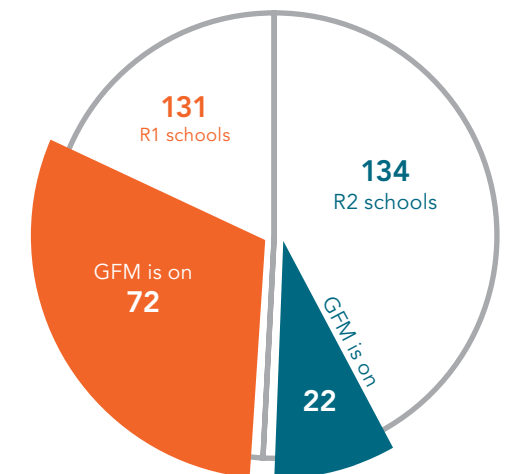
19% of faculty at secular schools identify as “born-again”*



39% of graduate students experience symptoms of moderate-to-severe depression. They are six times as likely to experience depression and anxiety compared to those outside academia.**

* 1) religion.ssrc.org/reform/Gross_Simmons.pdf
 2) www.huffpost.com/entry/how-religious-are-america_b_749630
 ** www.insidehighered.com/news/2018/03/06/new-study-says-graduate-students-mental-health-crisis

265 Graduate Research Universities



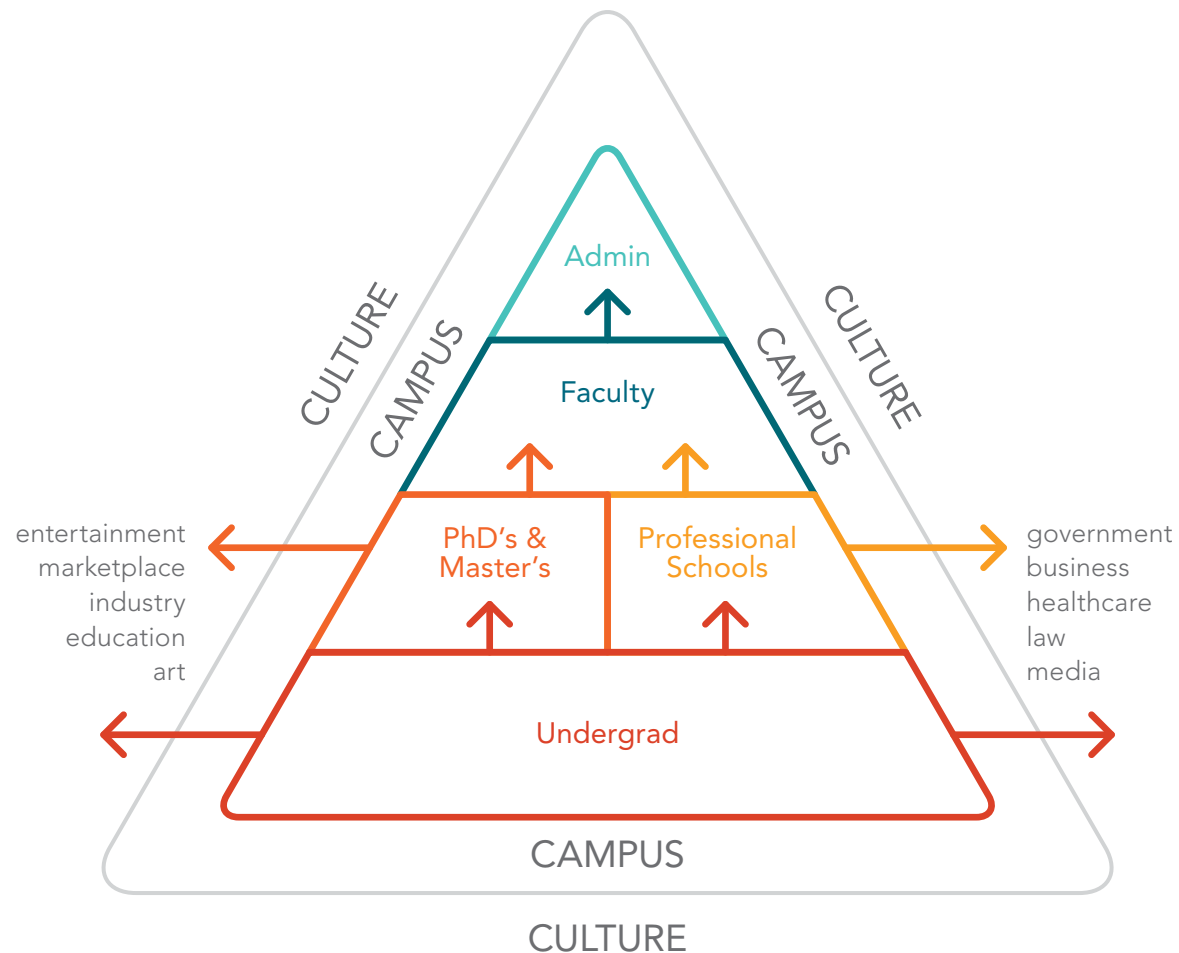
R1 schools engage in the “highest research activity” while R2 schools conduct “higher research activity.” Data is current as of April 2022.



A Little Yeast Leavens the Whole Loaf

For 30 years, GFM has invested in those with the greatest potential to influence the campus and the culture—current faculty, emerging scholars, and future professionals. Along with all of InterVarsity, GFM’s vision is to see students and faculty transformed and developed into world changers, especially those positioned to bring renewal to the campus.

Our **primary strategy** is to plant and grow witnessing communities of serious disciples in the vocational context of research universities:



Faculty communities

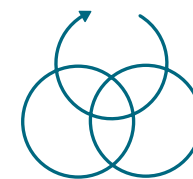


Graduate fellowships

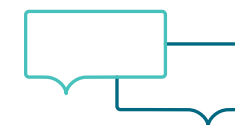


Professional school groups
(Law, Business, Healthcare, etc.)

These groups all share **four ministry commitments**:



Spiritual
Formation



Community



Evangelism
& Service



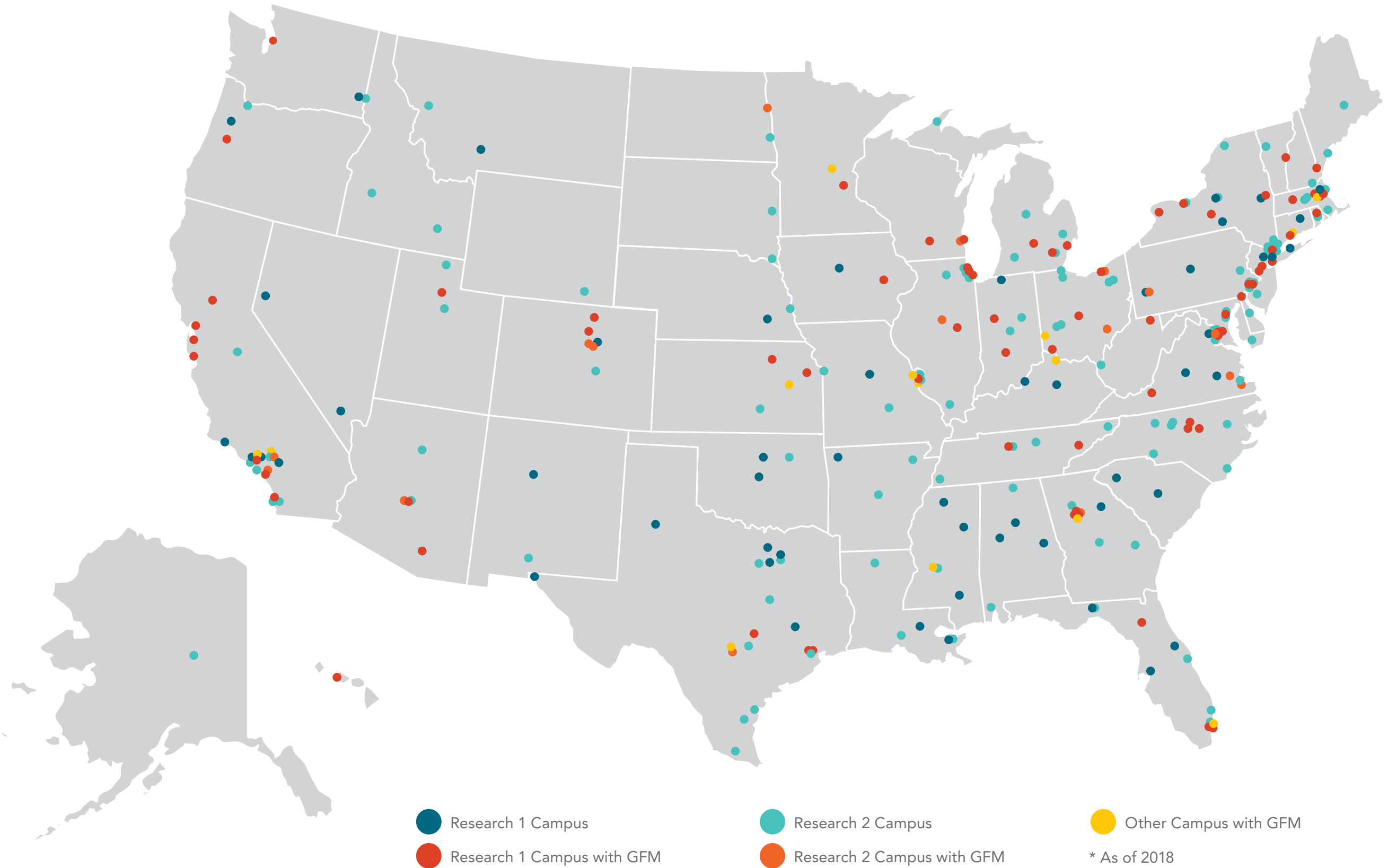
Integration of Faith,
Learning, & Practice

GFM campus ministers guide these witnessing communities and equip these vocational disciples on campus. We labor to increase a faithful, renewing presence—more yeast, better yeast—on campus and then out into the wider culture.

**No other ministry serves
grad students and faculty
on this scale.**



GFM across the Country*



GFM Leadership Team



Bobby Gross
Vice President of GFM



Kathy Tuan-MacLean
National Director of
Faculty Ministry



Marcia Wang
Director of GFM
Focused Ministries



Anna Lee-Winans
Director of
Strategic Initiatives



Lorrey Thabet
Director of Operations
for GFM



Emily Umulis
Director of Training and
Leadership Development



Melodie Marske
Regional Director,
GFM Midwest



Kathy Cooper
Regional Director,
GFM Northeast



Don Paul Gross
Senior Regional Director,
GFM South Central

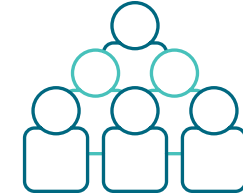


Lisa Liou
Regional Director,
GFM West

A Snapshot of Our Ministry*



130
campuses
with GFM



238
witnessing communities
85 graduate • 75 professional • 78 faculty



1,406
faculty involved
+1200 via undergrad



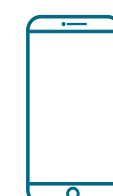
3,334
graduate students
involved



61%
students of color and
international students



200
GFM staff
153 paid • 47 volunteer



4,500
students and faculty
resourced virtually

*Numbers as of December 2021

Vice President of Graduate & Faculty Ministries

The Position

The Vice President of Graduate & Faculty Ministries (GFMVP) will provide vision and strategic leadership to establish and advance witnessing communities of graduate students and faculty at colleges and universities.

The GFMVP will supervise the GFM Leadership Team and will report directly to Jason Thomas, the Chief Campus Ministry Officer and Executive Vice President, Field Ministries.

The Opportunity & Essential Responsibilities

- Shape vision and strategy for planting graduate student chapters on 34 Research 1 campuses with no GFM chapter and 31 Research 2 campuses with no InterVarsity chapter of any kind
- Shape vision and strategy for growing graduate student participation, evangelistic fruit, the pipeline of diverse staff candidates
- Lead Faculty Ministry Department to increase breadth of reach to more faculty, specifically growing faculty chapters
- Steward and cultivate the existing GFM strengths such as a seasoned leadership team, strategic planning rhythms, prayer practices, staff longevity, campus volunteers, and clarity around core commitments
- Explore new external partnerships in the academic and university worlds, while maintaining mutually beneficial relationships with many existing GFM partners.
- Increase GFM's position as a leading voice and entity in and to the university
- Work collaboratively and build exceptionally strong working relationships with the Field Leadership Team as you collectively lead the 2030 Calling
- Oversee a \$11 million division with 200 campus ministry staff and volunteers

Required Qualifications

- Bachelor's degree required; graduate degree strongly preferred
- Demonstrated experience as a senior leader in managing and implementing successful, comprehensive ministry programs to achieve goals
- Demonstrated experience establishing and growing a thriving department
- Ability to formulate and cast a vision in a manner that inspires and rallies individuals and teams to achieve the mission and vision
- Leadership skills, including negotiation, problem solving, decision making, and delegation
- Significant theological and spiritual maturity
- Demonstrated mature judgment, with a high level of personal and professional integrity and trustworthiness
- Extensive cross-cultural experience, including conflict resolution and leadership when crossing cultures
- Excellent relationship-builder and able to interface effectively with all levels of management, staff and members of the community
- Strong financial acumen. Experience preparing and managing department and project budgets
- Demonstrated ability to raise funds for staff and programs; including experience in the funding needs of women and ethnic minority persons in ministry
- Ability to travel extensively



Additional Information

- This position is employment at-will, but it is expected that s/he will make a commitment to serve—at minimum—for five years.
 - The position begins on January 1, 2023.
 - InterVarsity is an equal opportunity employer that does not discriminate against any employee or applicant for employment on the basis of race, sex, age, national origin, disability, or status of a veteran or citizenship. Women and ethnic minorities are encouraged to apply. This policy pertains to compensation, training, promotions, benefits, and all other terms and conditions of employment.
 - Anyone who possesses the requisite qualifications and senses a call from the Lord should apply. Also, feel free to nominate others and/or encourage them to apply. Information supplied by interested parties will be handled with confidentiality
- ### Résumé
- When formulating your résumé, please include the scope of leadership responsibilities for each position you have held in the past and expand upon any

experiences related to ministry and/or the university.

Application

Refer to [this website](#) to access the application.

References

Please provide at least three references. Include your pastor or other spiritual mentors, supervisors, peers, or direct reports. Please include phone and email contact information.

Deadline

Deadline for applications is June 15, 2022.

Submission

Send completed application materials to:

Ryan Meixner

Human Resources Director

InterVarsity Christian Fellowship

635 Science Drive Madison, WI 53711

Email: ryan.meixner@intervarsity.org



InterVarsity Christian Fellowship/USA
635 Science Dr. • Madison, WI 53711
608.274.9001 • intervarsity.org